

MT100 Markisolette



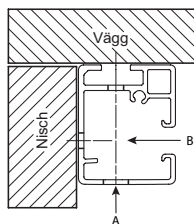
- Ensure that the awning is fixed to a sufficiently secure base. If needed - contact the façade- or window supplier for specific information.
- Check that the screen fits where supposed to be installed.
- Opening windows and doors may limit the possibility for installing screens.
- The motor and any control equipment must be installed by an authorised electrician.
- Openable windows and doors may limit the installation of markisolettes

MT 100 - Guide rails and arm stops (extension brackets view next page)

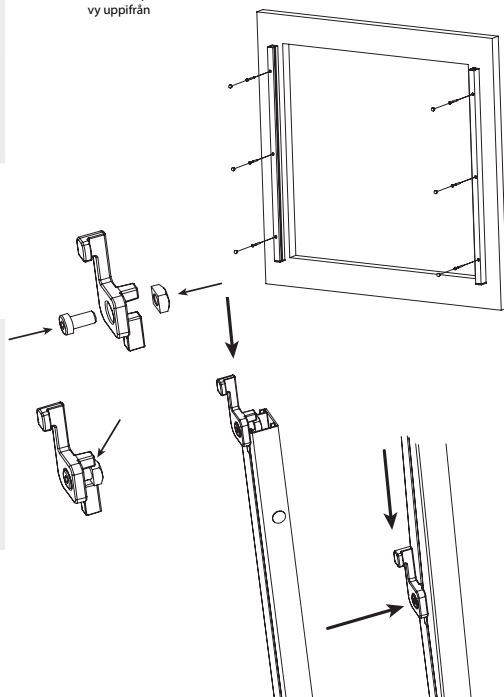
Use the drilled holes in the guide rails to mark the hole positions on the mounting surface (wall A or niche B) and drill, if necessary, to correct diameter.

Screw the guide rails to the surface with suitable screws and check so that the profiles are vertical, parallel and on the same level.

Before continuing, check that the rails are installed with the same c-c as the legs of the cassette gables. Adjust if needed.



Vänster styrskena,
vy uppifrån



Pre-assemble the arm stops as described on the right side.

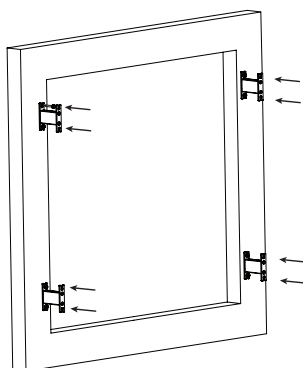
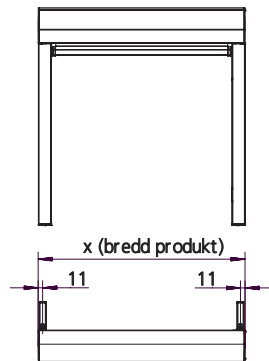
Slide down the arm stops to the correct height in each guide rail (same height in both rails).

Tighten the screws.

Assembly of extension brackets (optional)

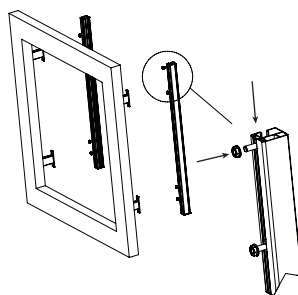
Measure the positions for the extension brackets - then scrow these to the wall with proper screws.

Pre-assemble the flange nuts on the T-slotted bolts. Slide these into the guide rails (2 pcs/bracket).



Screw the guide rails to the extension brackets

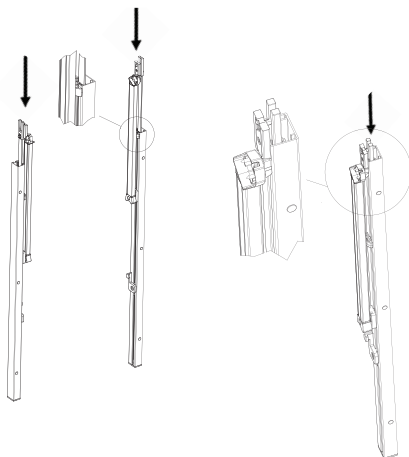
Make sure the guide rails are vertical, parallell and levelled.



MT 100 - Installing sliding arms and cassette on the guide rails

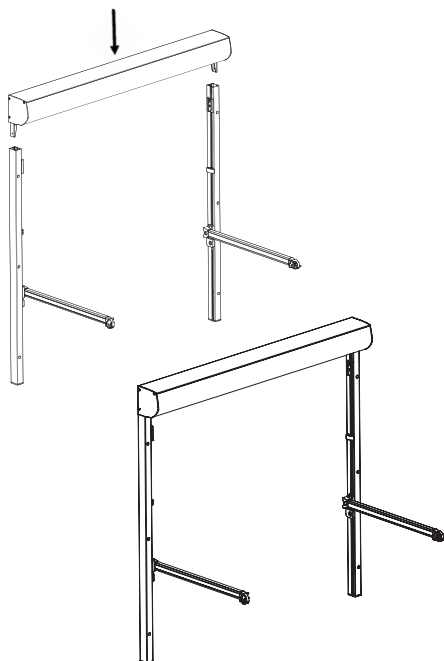
Slide down the arms in the guide rails as described (R + L) according to picture to the right.

Slide down the arm to the pre-assembled arm stops in the guide rails.



Assemble the cassette on the guide rails by sliding down the legs of the gables in each guide rail.

When installed - the gables should align with the guide rails.



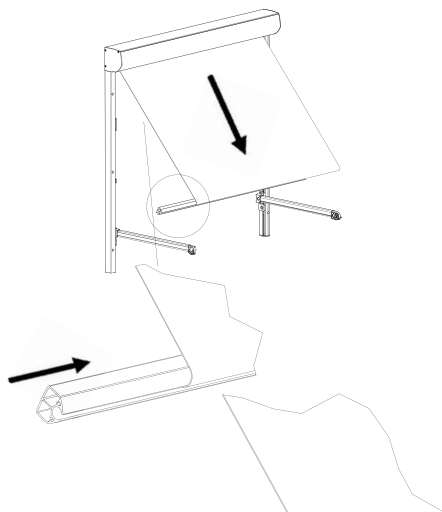
MT 100 - Assembling the front profile

Roll off enough fabric for assembling the front profile.

Slide the front profile on to the fabric.

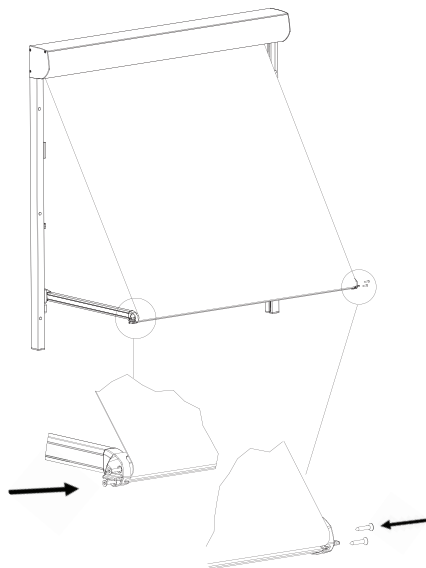
Make sure the front profile is centered on the fabric.

Handle the front profile horizontally to prevent the weights from falling out.



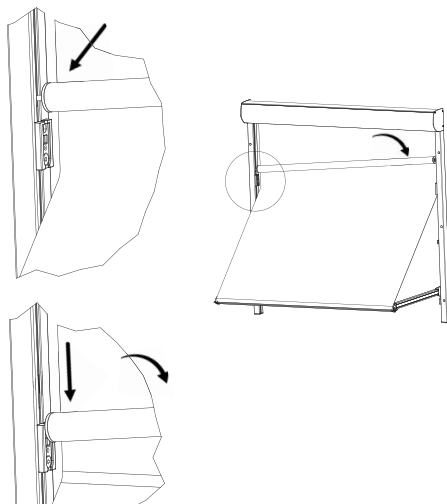
Screw the arms to the front profile - use the enclosed screws (2 screws/ side)

Handle the front profile horizontally to prevent the weights from falling out.



MT 100 - Assembling the breaking tube

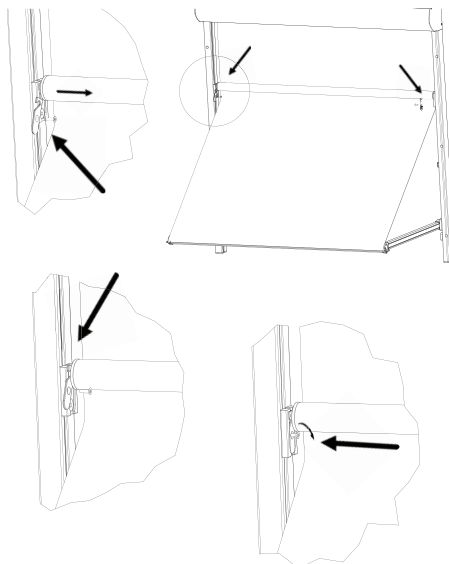
Install the breaking tube on the top part on the sliding arms at an angle.



Assemble the securing plates that keeps the breaking tube in position.

Orient the plates so that the recessed side on the hole pointing to the centre of the awning on both sides

Screw the plates to the sliding arms using enclosed screws. Use a small screwdriver - do not overtighten.

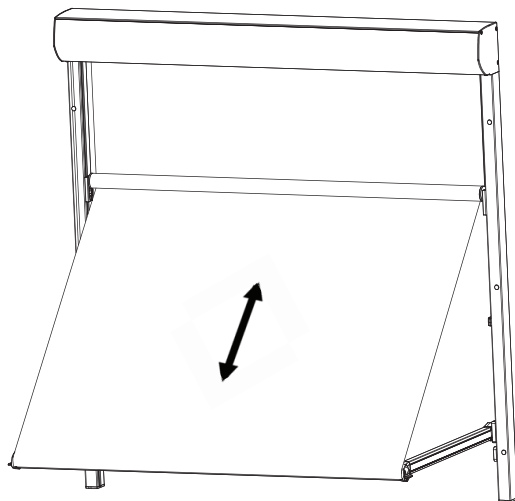


MT 100 - Setting end limits and test drive

Connect the awning to the electricity.

Adjust the height of the arm stops and the end positions of the motor.

Operate the awning between the end positions to verify proper function of the awning,



Maintenance

Maintenance:

The frame and the fabric are subjected to dirt and pollution and should be cleaned at least once a year in order to retain their high finish. This is particularly important in more exposed installations, e.g. environments near the sea. Use a soft cloth, tepid water and a mild cleaner. Do not use a high-pressure washer as it can damage the awning fabric and any electrical equipment, etc. For a detailed description of cleaning the fabric, please refer to its usage instructions.

Changing the fabric:

Before changing the awning fabric it is recommended to contact the company from which the awning was purchased to arrange an inspection of the frame. This company can provide more information about changing the fabric and also provides advice in case some other components may need to be replaced in order for the awning to maintain its finish and function.

Warning!

Always allow a professional to perform work that requires the cassette to be opened. The cassette needs to be opened when replacing the motor and/or fabric. When the cassette is opened, other parts can be damaged or out of position, and moving parts become accessible.

Any work with the motor requires proper authorization. This should therefore always be carried out by a professional.

The original document may not be altered in text or version without the consent of Hunter Douglas Scandinavia