

ZIP 65



- Ensure that the awning is fixed to a sufficiently secure base. If needed - contact the façade- or window supplier for specific information.
- Check that the Zip-screen fits where supposed to be installed.
- Opening windows and doors may limit the possibility for installing Zip-screens.

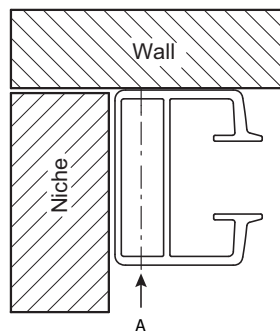
1 Installing ZIP-guides and guide rails

Slide the black ZIP-guides into the guide profiles. The cut end of the ZIP-guide must be on the upper side.

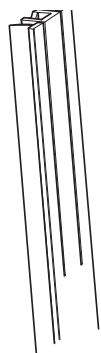
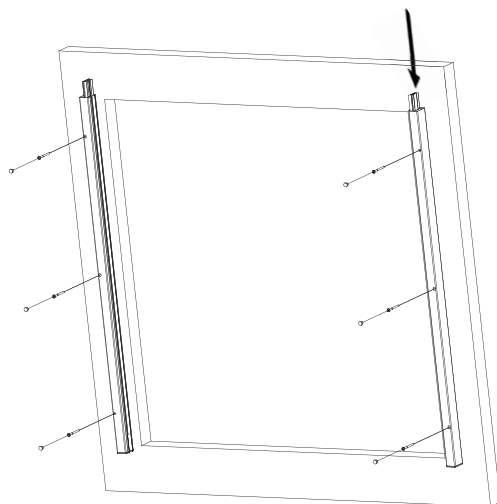
Use the drilled holes in the guide rail to mark the hole positions on the mounting surface (wall A) and drill, if necessary, to correct diameter.

Screw the guide rails to the surface with suitable screws and check so that the profiles are vertical, parallel and on the same level.

Before continuing, check that the rails are installed with the same c-c as the legs of the cassette gables. Adjust if needed.



Left guide rail, top view



Cut upper end on plastic profile

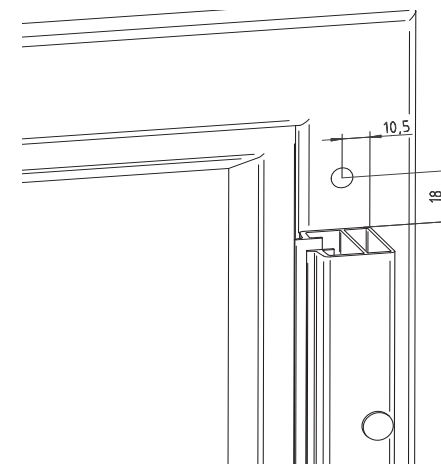
2 Assembling of interior pull tape operation

The hole for interior pull tape operation is to be drilled through the window/wall behind the cassette (see pic. for hole placement).

The hole must be $\varnothing 14$ mm.

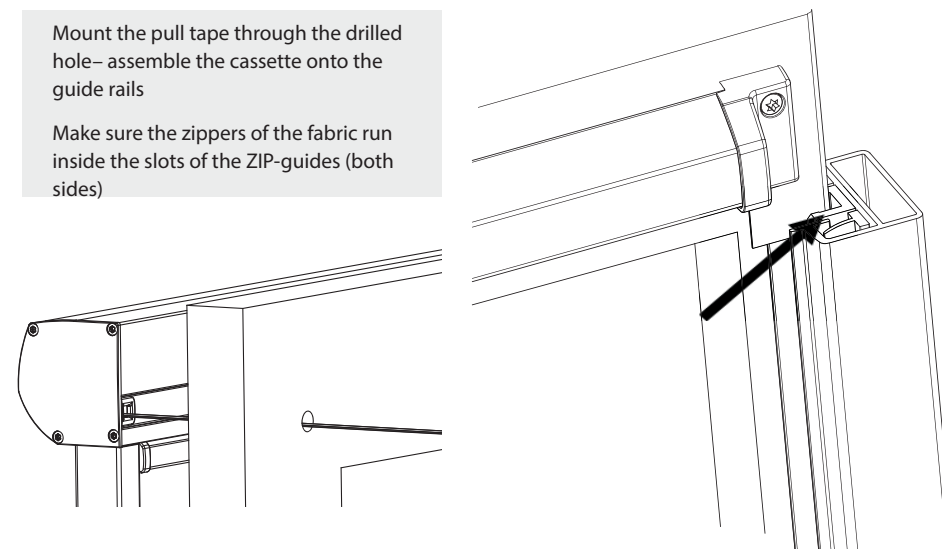
To prevent water penetration the hole should be protected with silicone bushing or similar.

Contact your window supplier if information needed how the hole could be done.



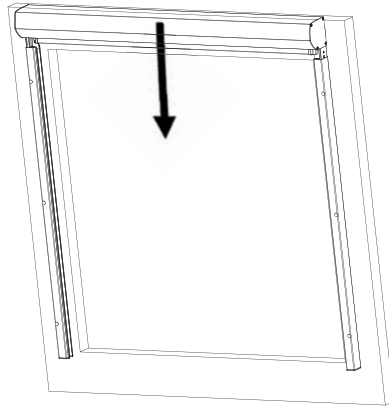
Mount the pull tape through the drilled hole - assemble the cassette onto the guide rails

Make sure the zippers of the fabric run inside the slots of the ZIP-guides (both sides)



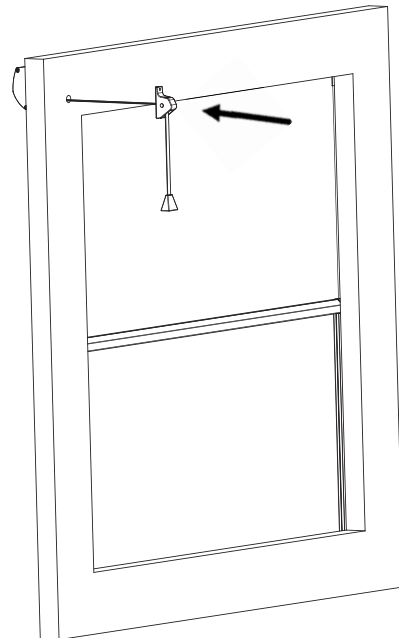
3 Assembling the cassette

Carefully assemble the legs of the cassette gables into the guide rails, make sure the cassette gables rest on the guide rails and are levelled



Mount the pull tape through the tape lock and assemble the tassel onto the pull tape.

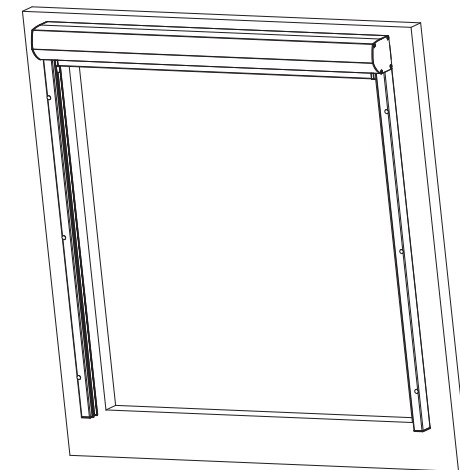
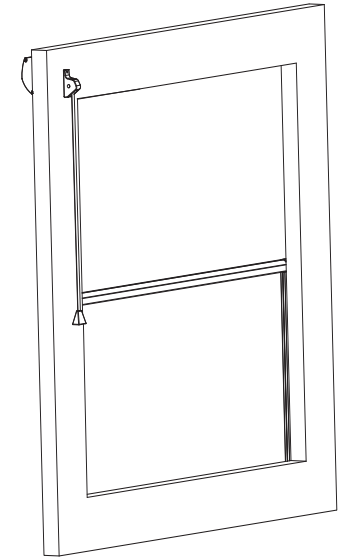
Screw the tape lock to the window/wall straight on the drilled hole – make sure the pull tape is not in contact with the drilled hole when operated.



3 Montering invändigt banddrag

Finish the installation by carefully lowering the front profile to the desired bottom position while holding the pull tape.

Move the tassel to desired position on the pull tape and make a knot directly under the tassel and cut the pull tape under the knot.



5 Maintenance

Maintenance:

The frame and the fabric are subjected to dirt and pollution and should be cleaned at least once a year in order to retain their high finish. This is particularly important in more exposed installations, e.g. environments near the sea. Use a soft cloth, tepid water and a mild cleaner. Do not use a high-pressure washer as it can damage the awning fabric and any electrical equipment, etc. For a detailed description of cleaning the fabric, please refer to its usage instructions.

Changing the awning fabric:

Before changing the awning fabric it is recommended to contact the company from which the awning was purchased to arrange an inspection of the frame. This company can provide more information about changing the fabric and also provides advice in case some other components may need to be replaced in order for the awning to maintain its finish and function.

Warning!

Always allow a professional to perform work that requires the cassette to be opened. The cassette needs to be opened when replacing the motor and/or fabric. When the cassette is opened, other parts can be damaged or out of position, and moving parts become accessible.